

ESR9850 Wireless 11N Gigabit AP Router

Quick Start Guide

Prerequisites:

- A standard CD-ROM drive
- ADSL / Cable Modem with RJ45 port.
- PC or Notebook with Ethernet network interface.
- Standard Web Browser
- CAT 5 network cable(s), RJ45 port on PC/Notebook.

STEP 1

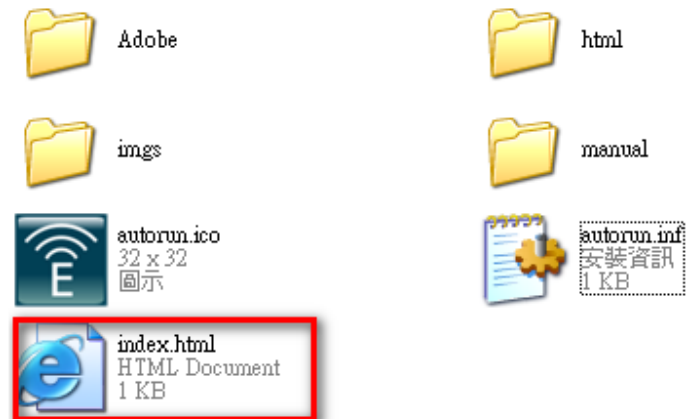
Power up **ESR9850**. Please wait until WLAN starts blinking.

STEP 2

Insert **Wizard CD** into your CD-ROM drive.

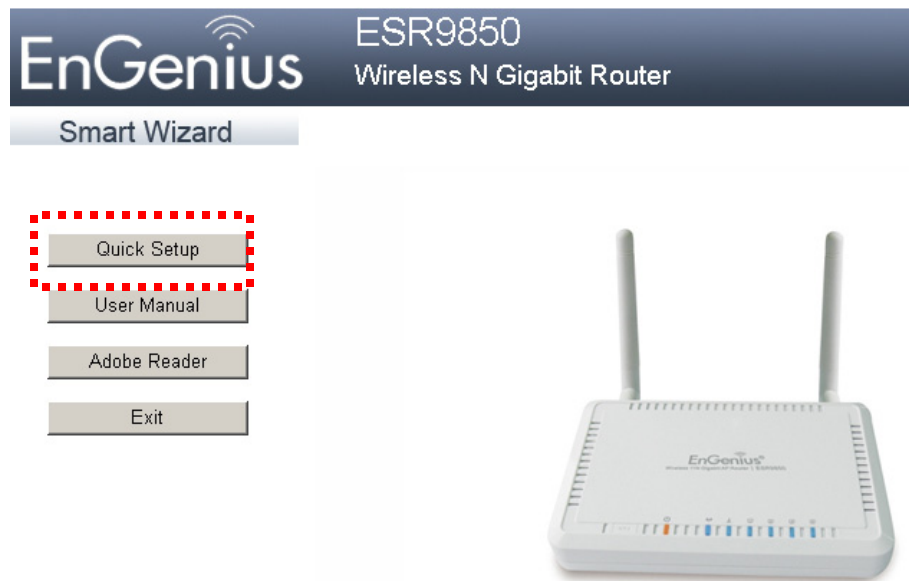
The Wizard should start in a few seconds. If Wizard does not start automatically, please browse the CD and Click on “**index.html**” to activate SMART

WIZARD.



Step 3

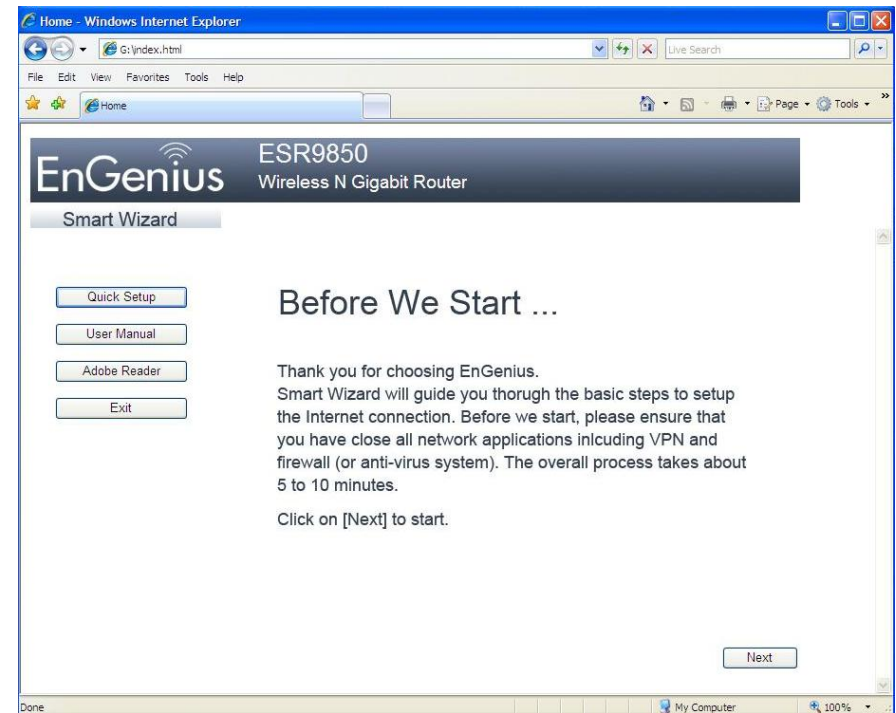
Click on 'Quick Wizard' to start installation



Please click on [**Quick Setup**] and follow the instructions given to complete the device initiation configuration.

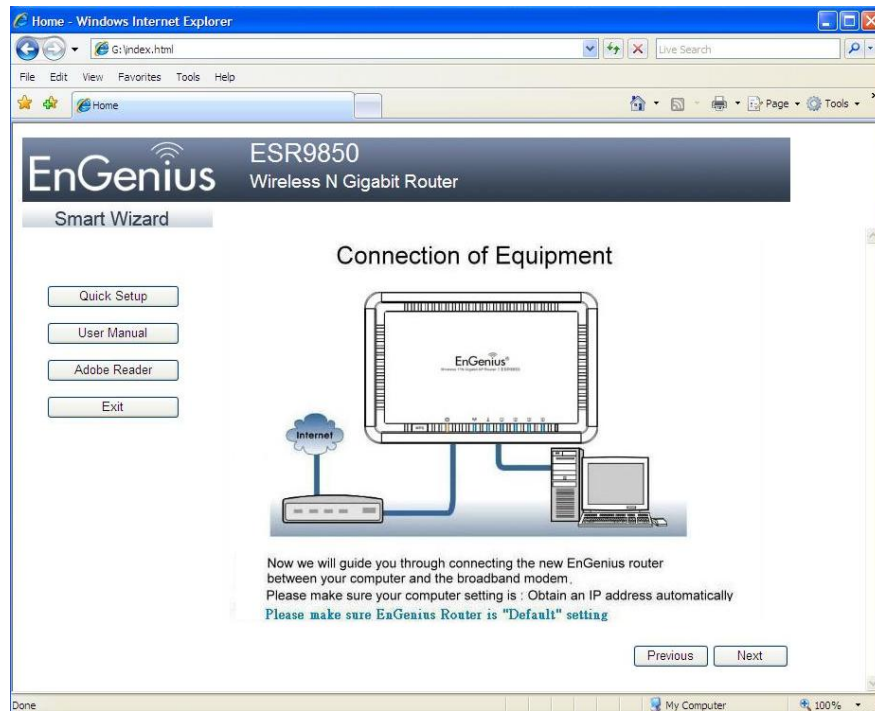
Step 4

Click 'Next' to continue the steps on connection



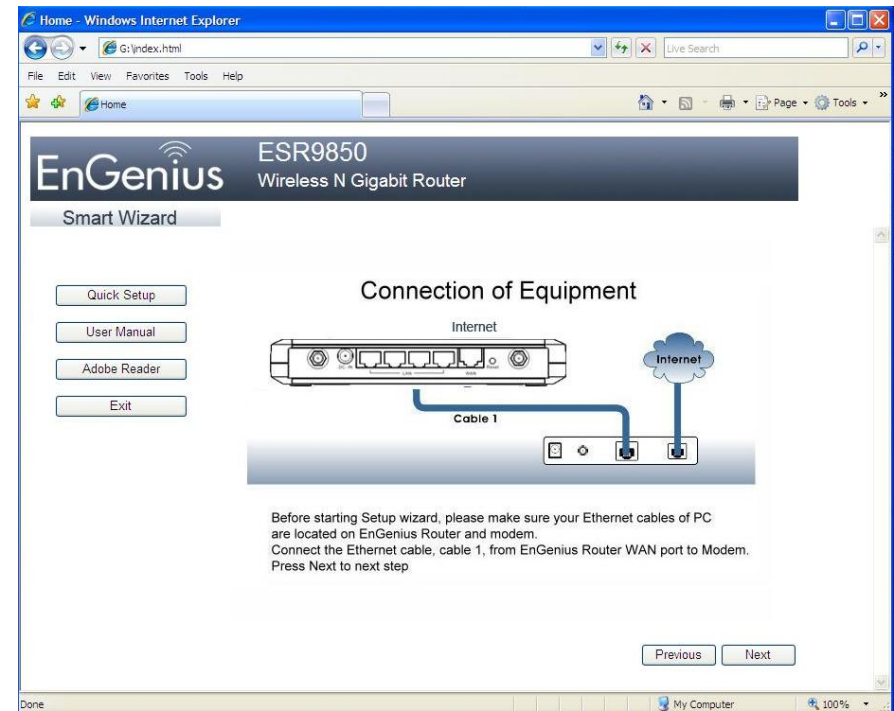
Step 5

Click 'Next' to continue



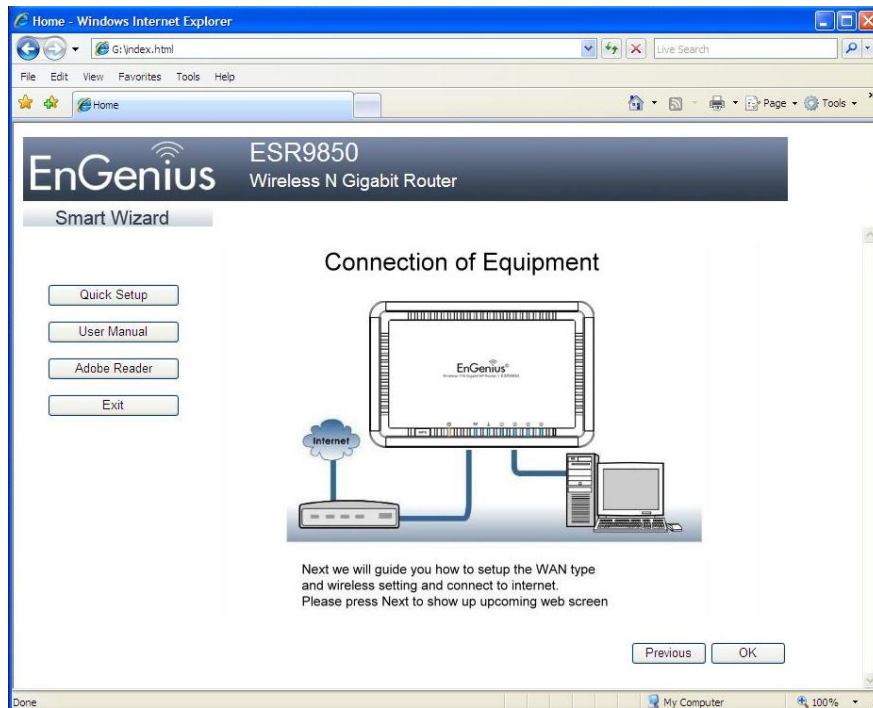
Step 6

Click 'Next' to continue



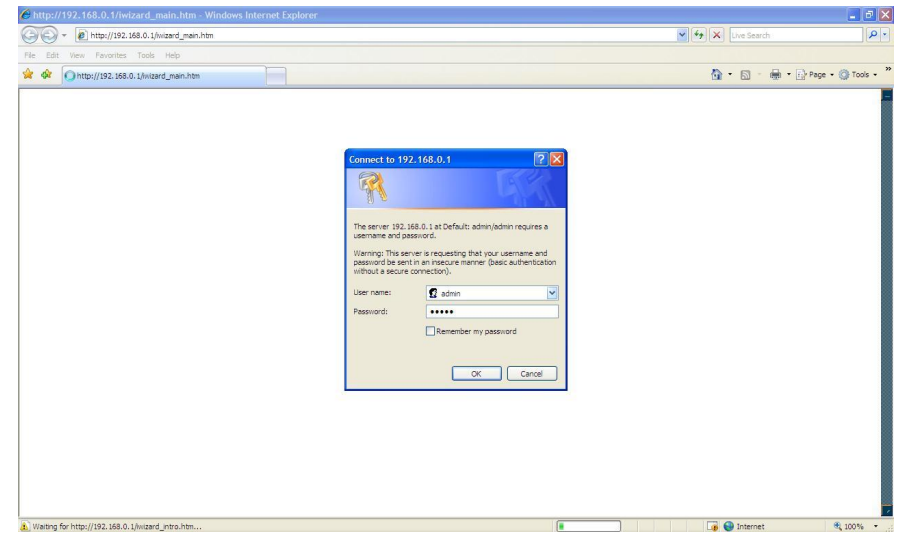
Step 7

Click 'Next' to Continue



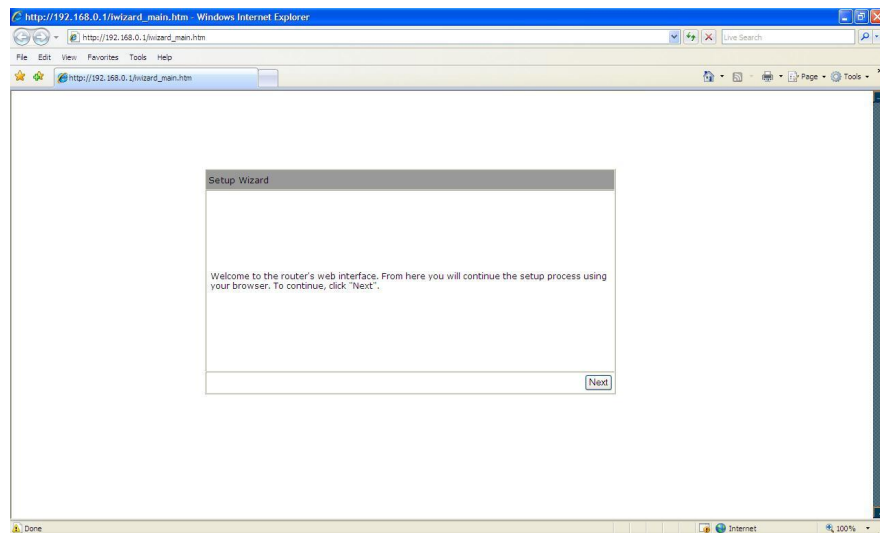
Step 8

Enter User Name and Password 'admin'



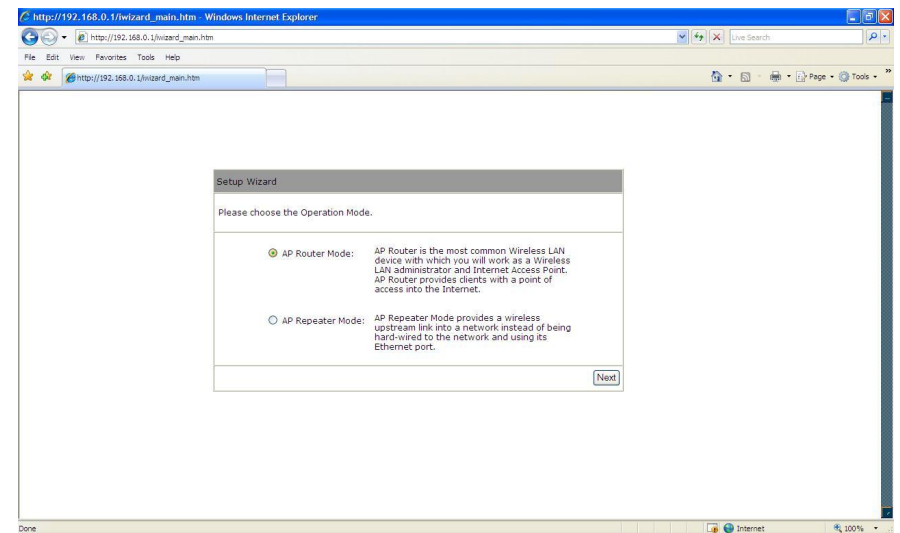
Step 9

Click 'Next' to proceed



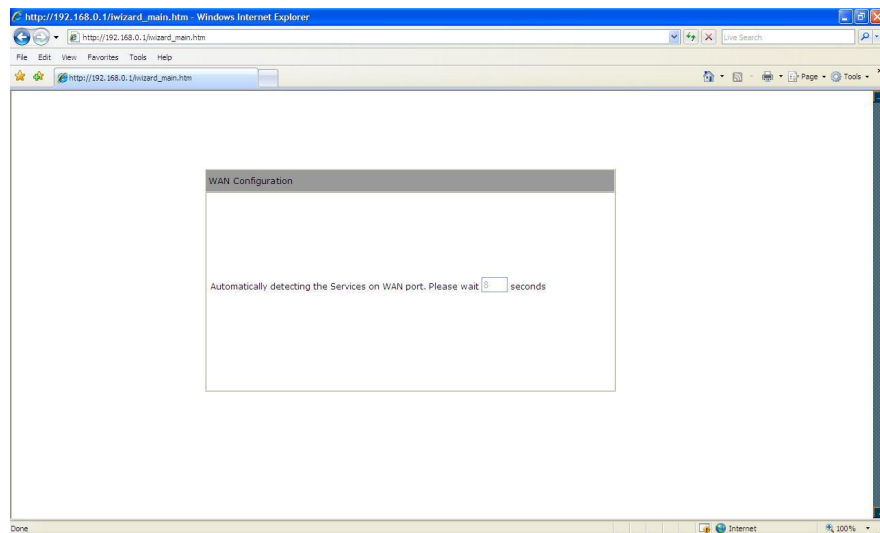
Step 10

Select 'AP Router Mode' and click 'Next'



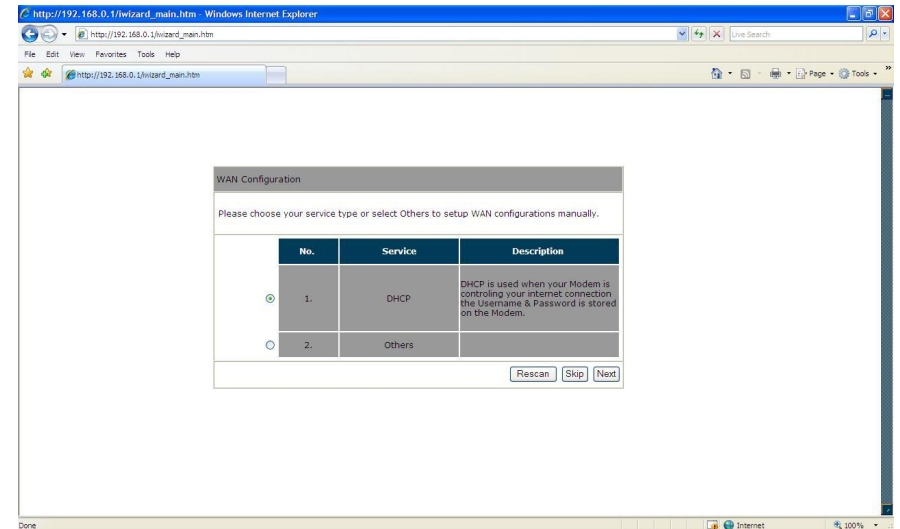
Step 11

Unit will reboot



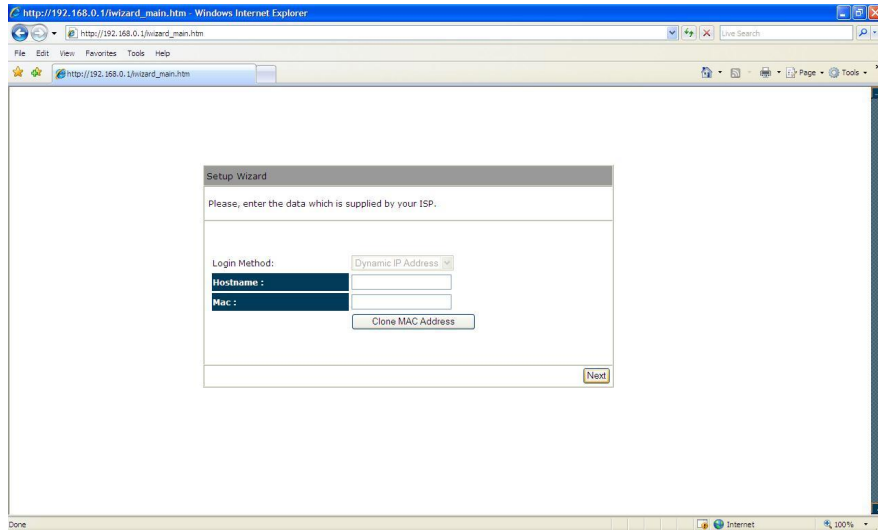
Step 12

Select 'DHCP' when connection from modem that is running DHCP server and click 'Next'



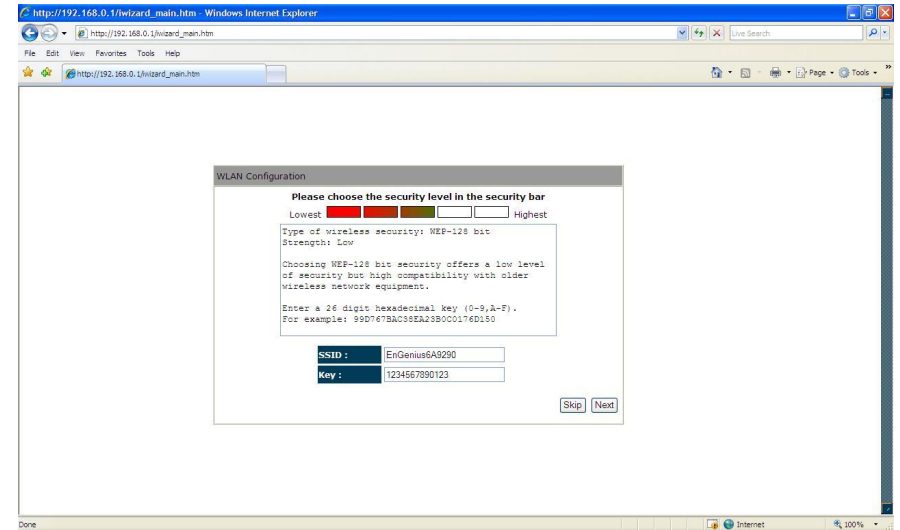
Step 13

If MAC cloning is necessary click on 'Clone MAC Address' if not just click 'Next'



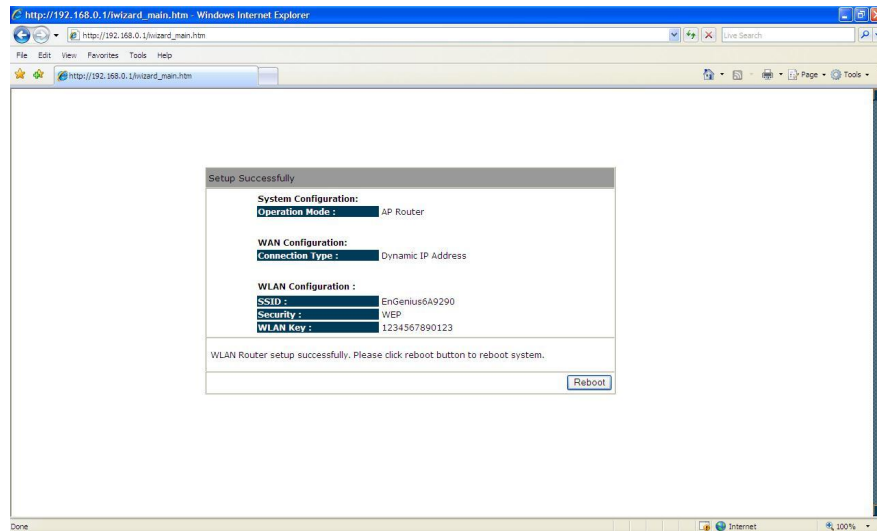
Step 14

Set 11b/g SSID and select bar to select type of encryption. Click 'Next' to continue



Step 15

Click 'Reboot' to allow system to apply setting and restart



Step 16

Once unit restart check status by scrolling the side bar

